

HARPER'S

Pictorial History

OF THE



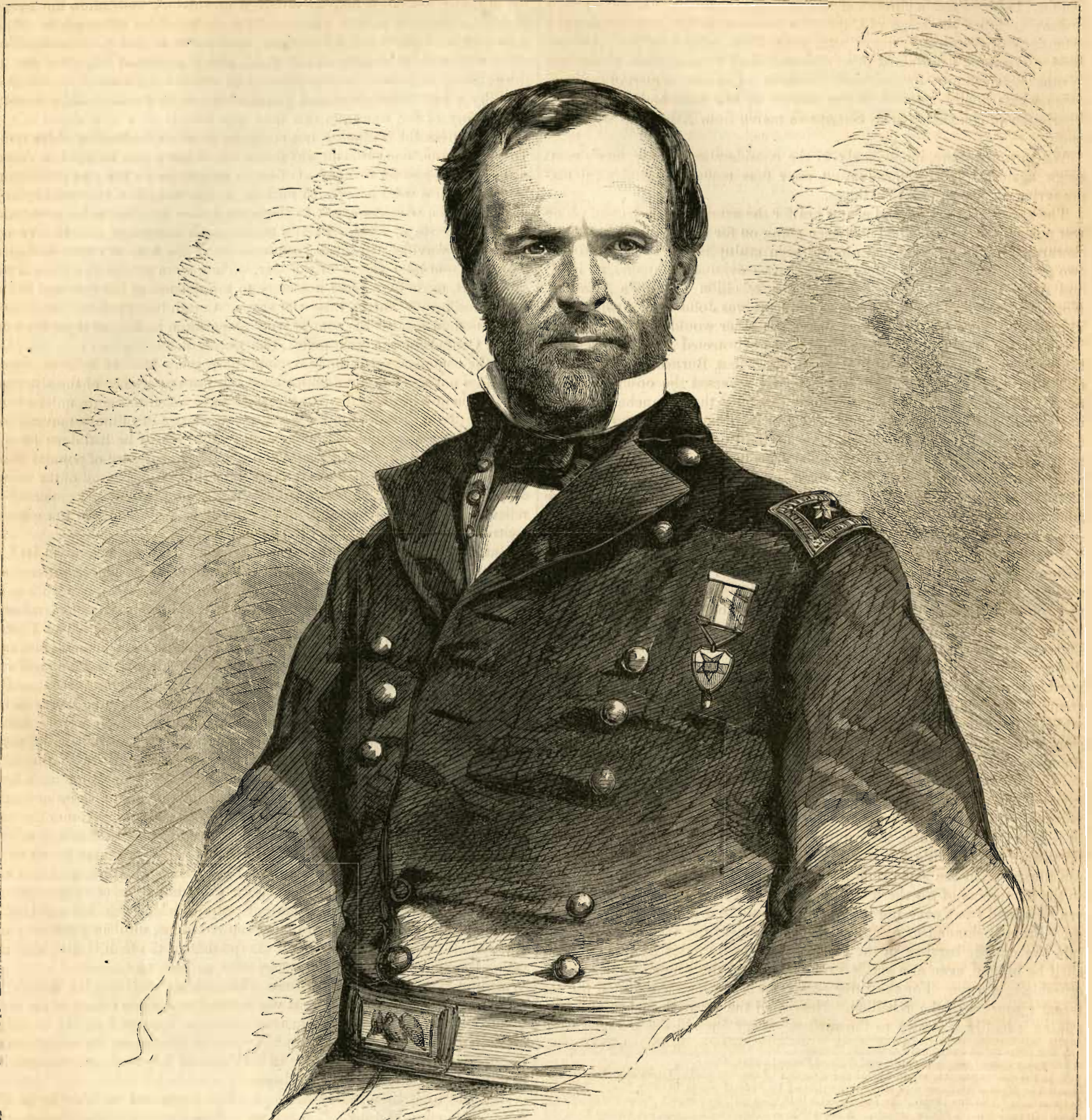
by Alfred H. Guernsey
and
Henry M. Alden.

GREAT REBELLION.

PART

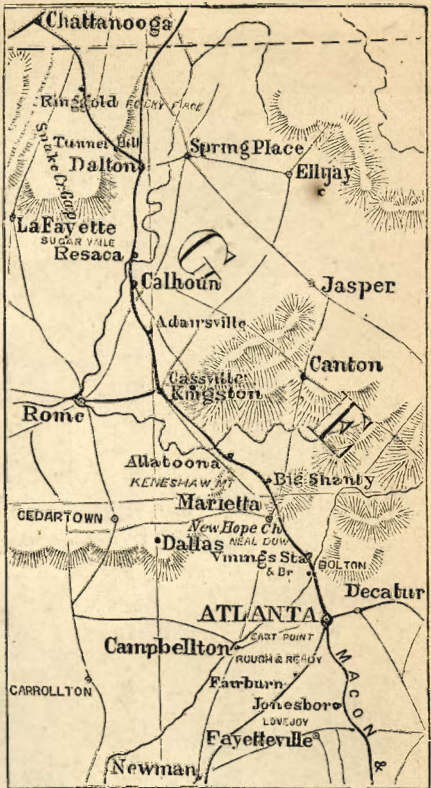
HARPER & BROS. PUBLISHERS, NEW YORK

SECOND.



WILLIAM TROUSDELL SHERMAN.





MAP OF THE ATLANTA CAMPAIGN.



VIEW OF ATLANTA FROM THE SIGNAL STATION NORTH OF THE CHATTAHOOCHEE.





O. O. HOWARD.

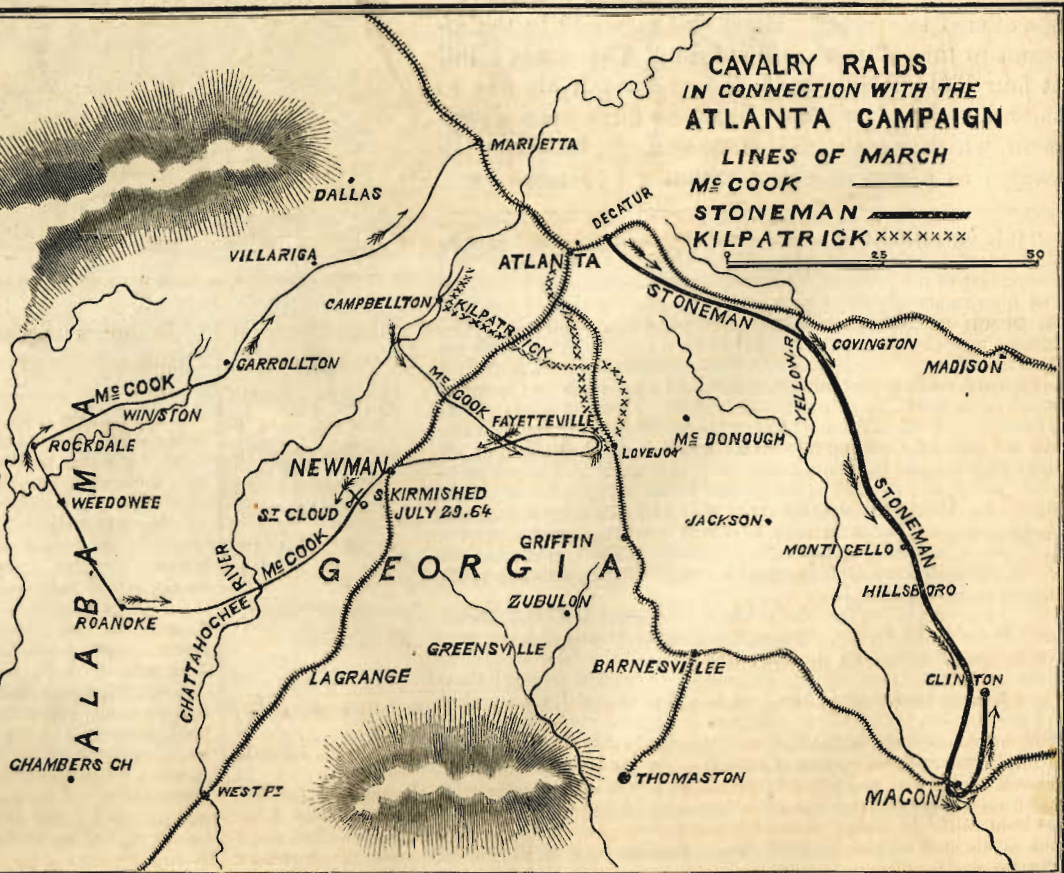
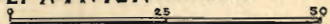


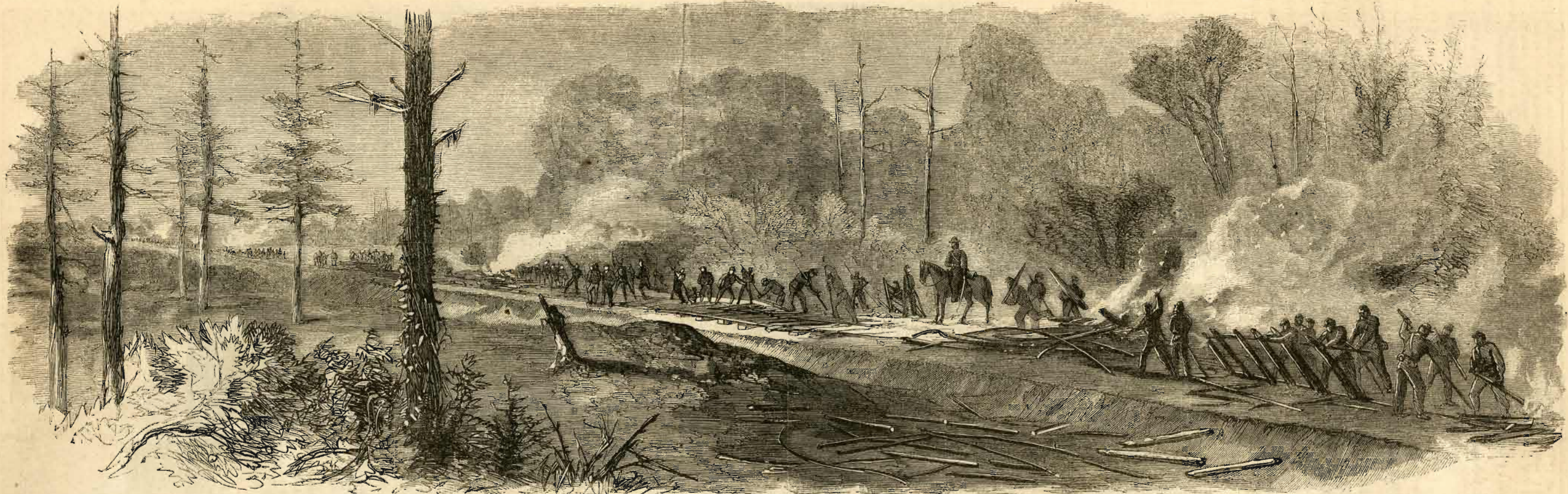
SHERMAN IN COUNCIL DECIDES TO RAISE THE SIEGE OF ATLANTA

CAVALRY RAIDS IN CONNECTION WITH THE ATLANTA CAMPAIGN

LINES OF MARCH

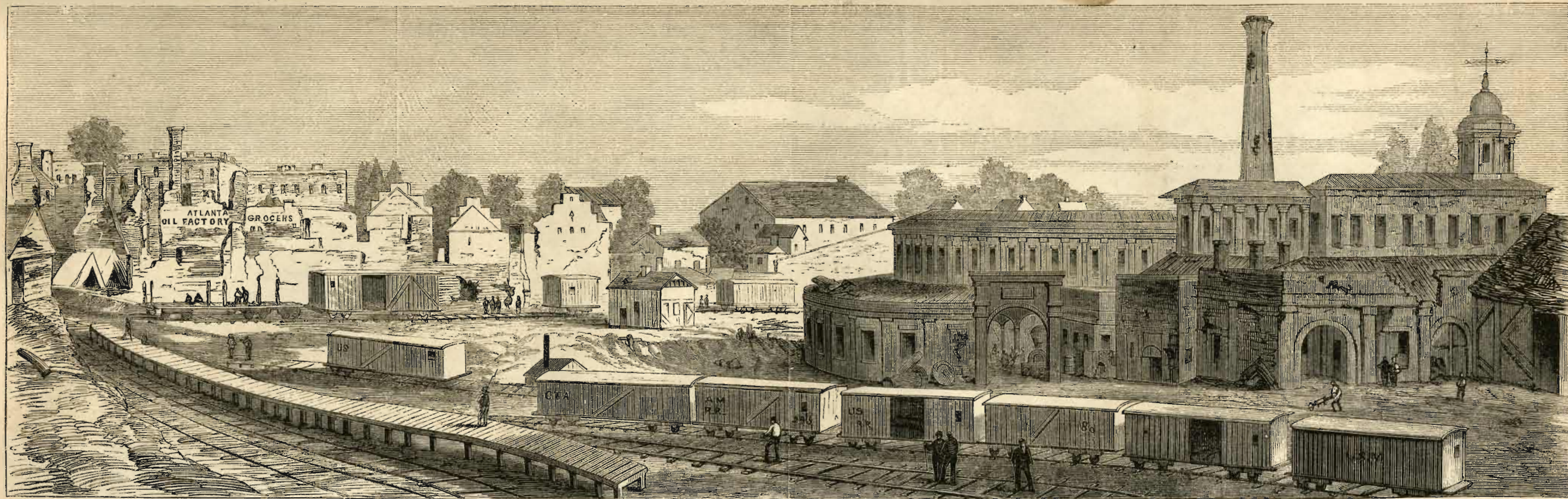
ME COOK ———
STONEMAN —————
KILPATRICK XXXXXXXX





SHERMAN'S ARMY DESTROYING THE MACON RAILROAD BETWEEN ROUGH AND READY AND JONESBOROUGH.

7 B



ATLANTA, GEORGIA.



EZRA'S CHURCH.



DEADBROOK AFTER THE BATTLE OF EZRA'S CHURCH.



CONFEDERATE PRISONERS BEING CONDUCTED FROM JONESBOROUGH TO ATLANTA.



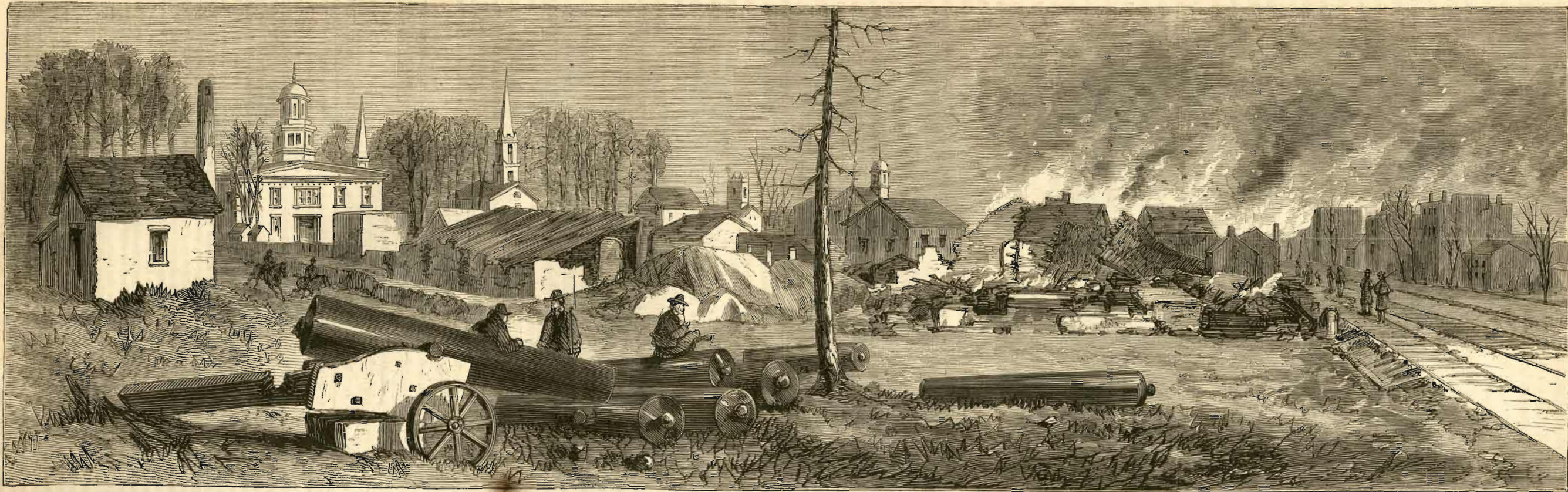
EXODUS OF CONFEDERATES FROM ATLANTA



SOLDIERS VOTING FOR PRESIDENT.



HOOD'S ATTACK ON ALLATOONA.



DESTRUCTION OF THE DÉPÔTS, PUBLIC BUILDINGS, AND MANUFACTORIES AT ATLANTA.



MAP ILLUSTRATING HOOD'S INVASION.



THE FOURTEENTH AND TWENTIETH CORPS MOVING OUT OF ATLANTA.



Howard.

Kilpatrick.

Logan.

Hazen.

Sherman.

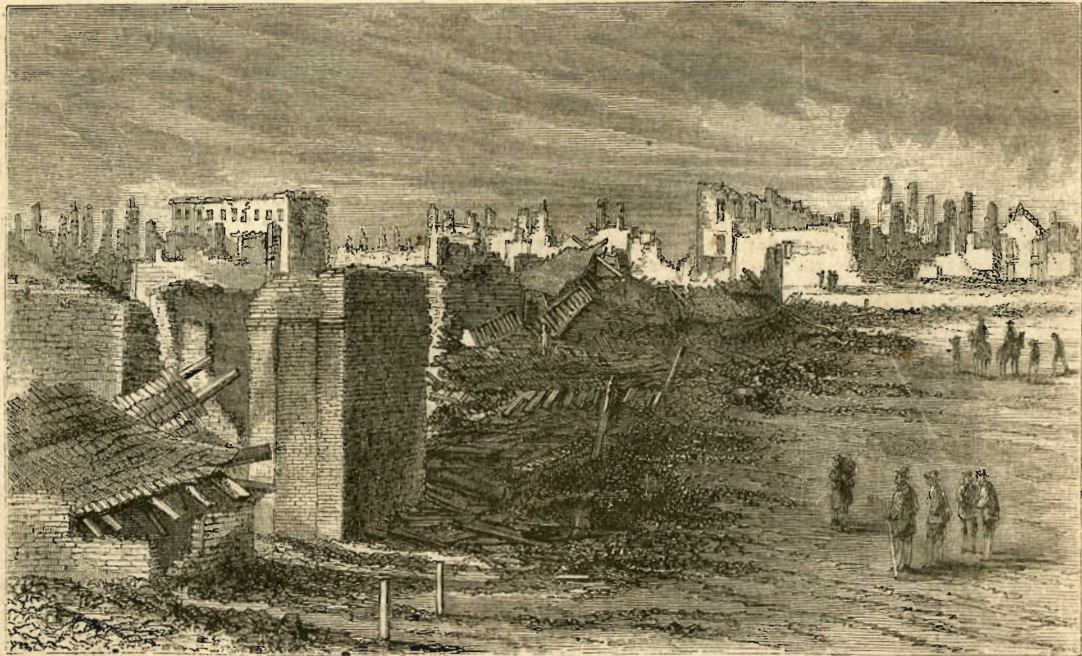
Jeff. C. Davis.

Slocum.

Blair.

Mower.

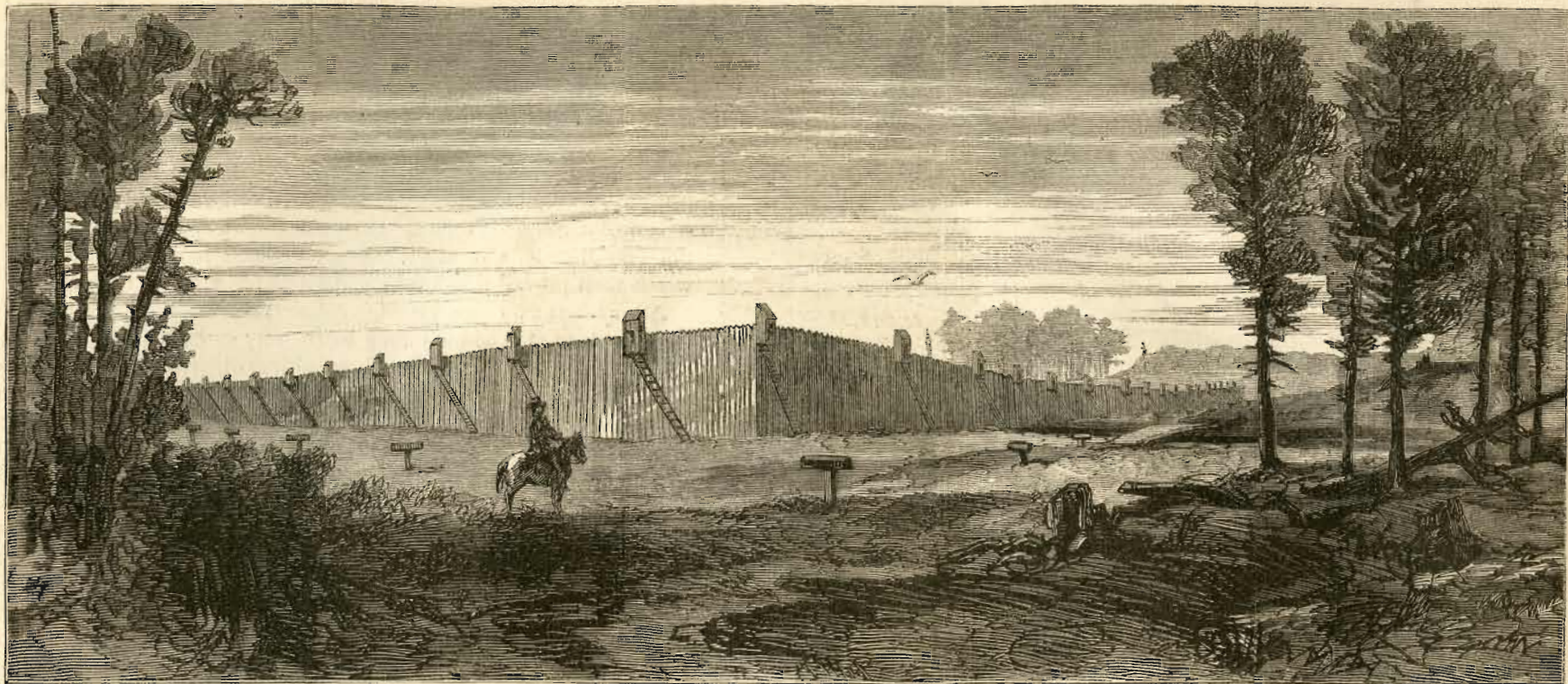
SHERMAN AND HIS GENERALS.



ATLANTA IN RUINS.



JUDSON C. KILPATRICK.



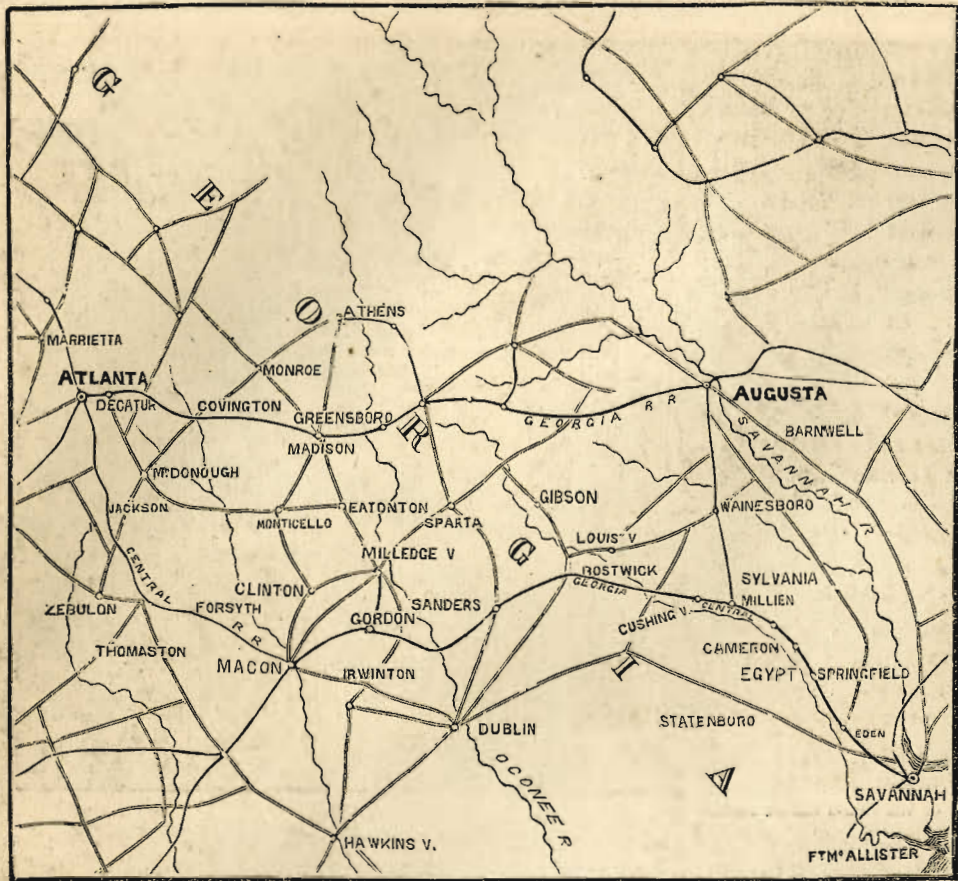
EXTERIOR VIEW OF THE PRISON PEN AT MILLEN.



INTERIOR VIEW OF THE PRISON PEN AT MILLEN.



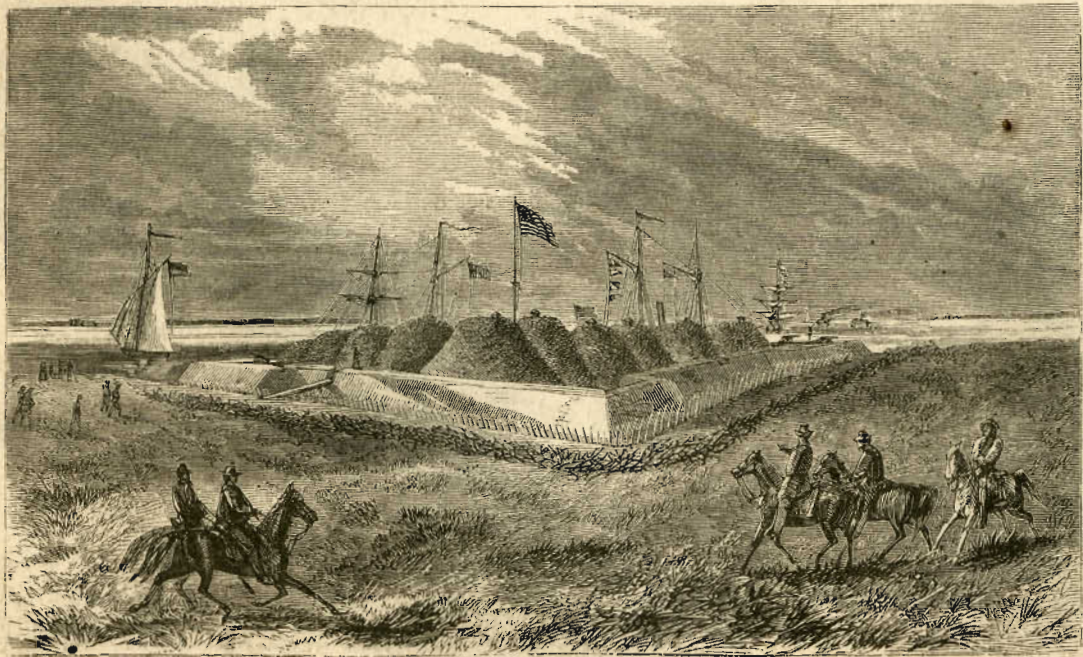
DESTRUCTION OF MILLEN JUNCTION.



MAP ILLUSTRATING THE MARCH TO THE SEA.



CAPITOL AT MILLEDGEVILLE.



FORT McALLISTER.



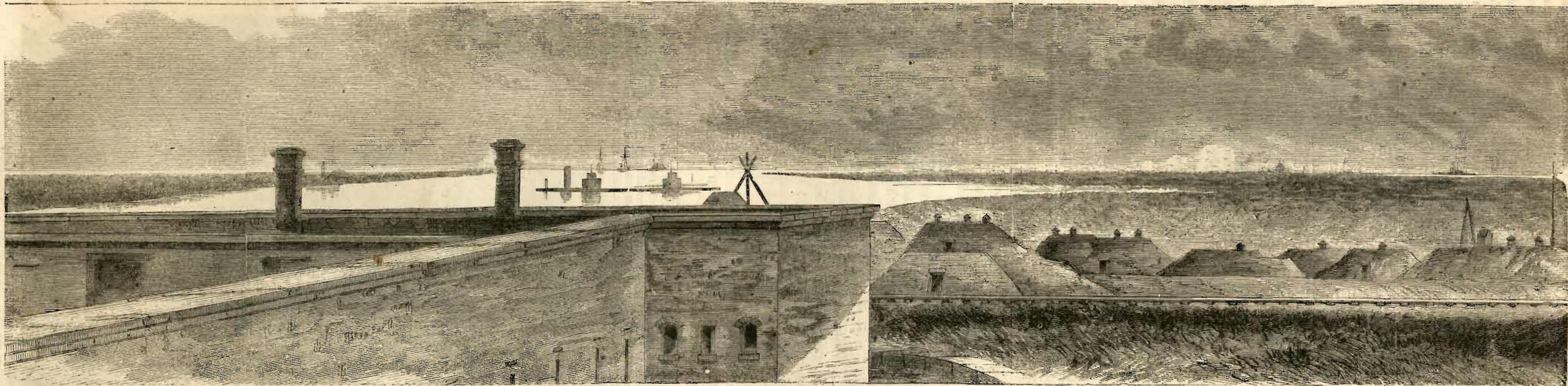
ASSAULT ON FORT McALLISTER.



WILLIAM B. HAZEN.



SHERMAN'S ARMY ENTERING SAVANNAH.

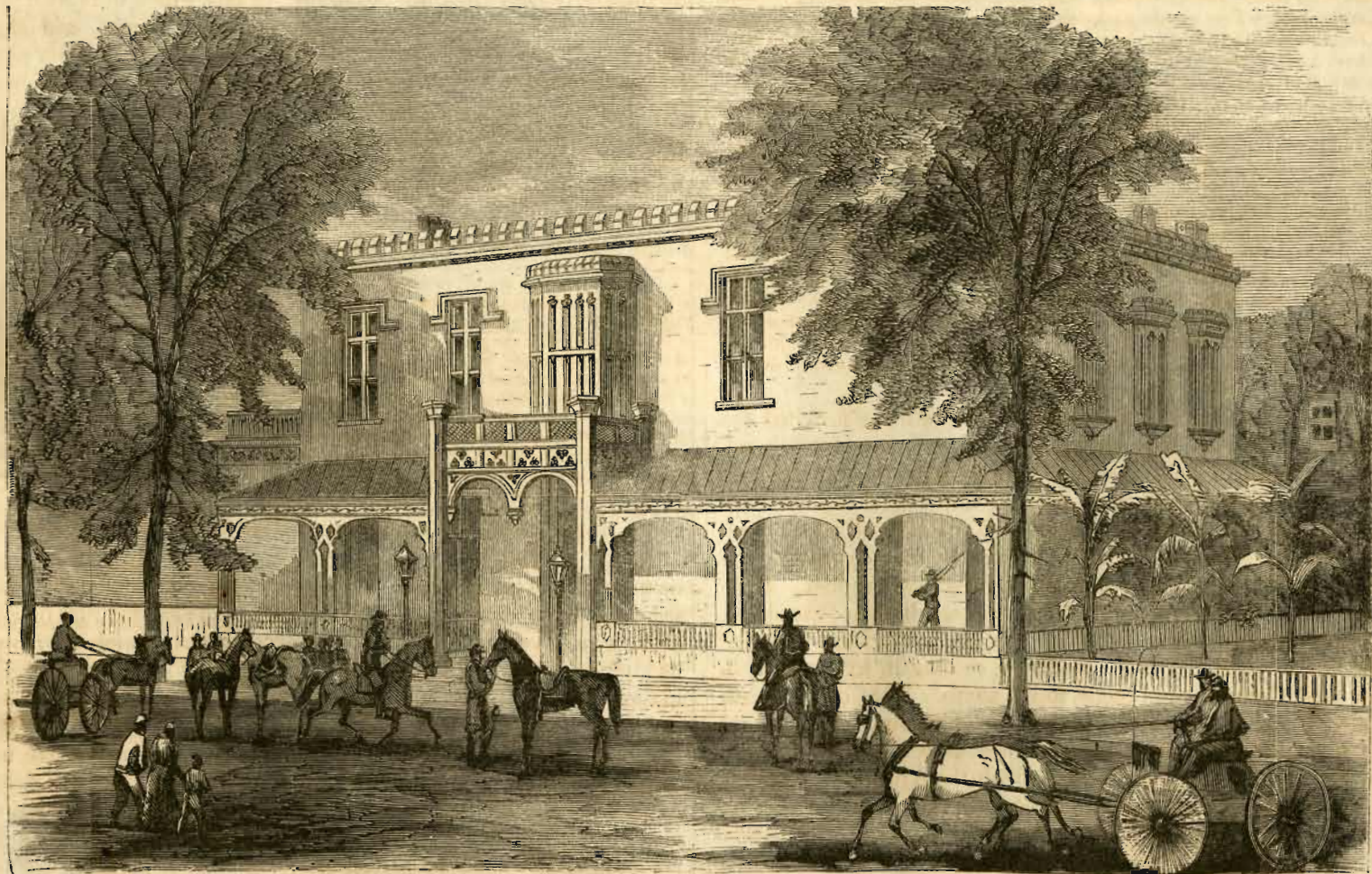


FORT JACKSON, SAVANNAH.

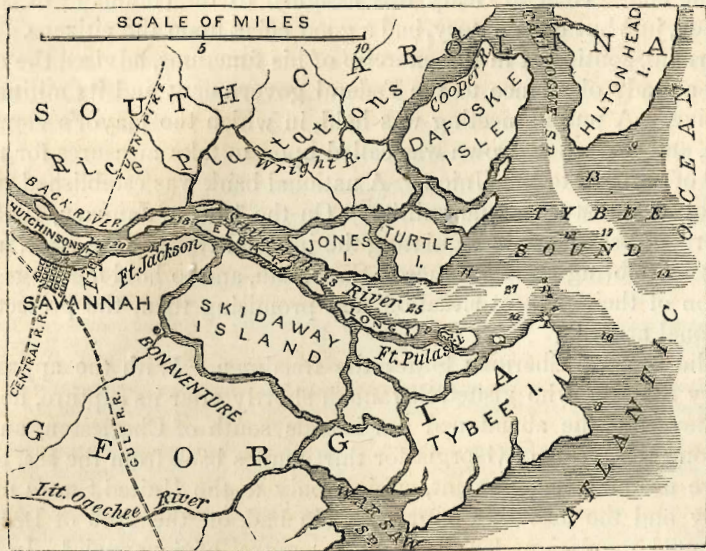


REBELS EVACUATING SAVANNAH, DEC. 20/64

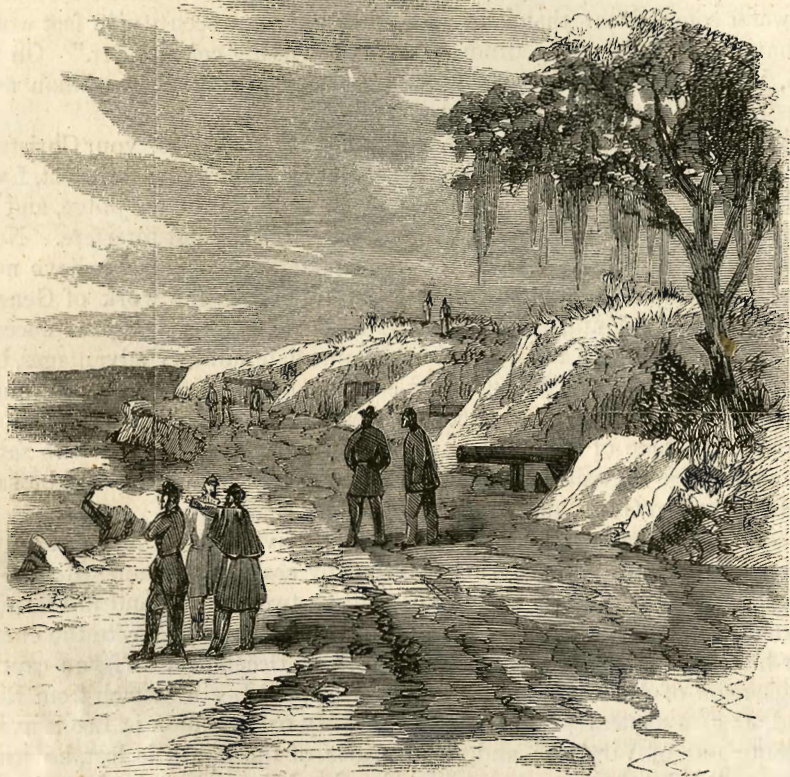
CONFEDERATES EVACUATING SAVANNAH.



SHERMAN'S HEADQUARTERS AT SAVANNAH.



APPROACHES TO SAVANNAH.



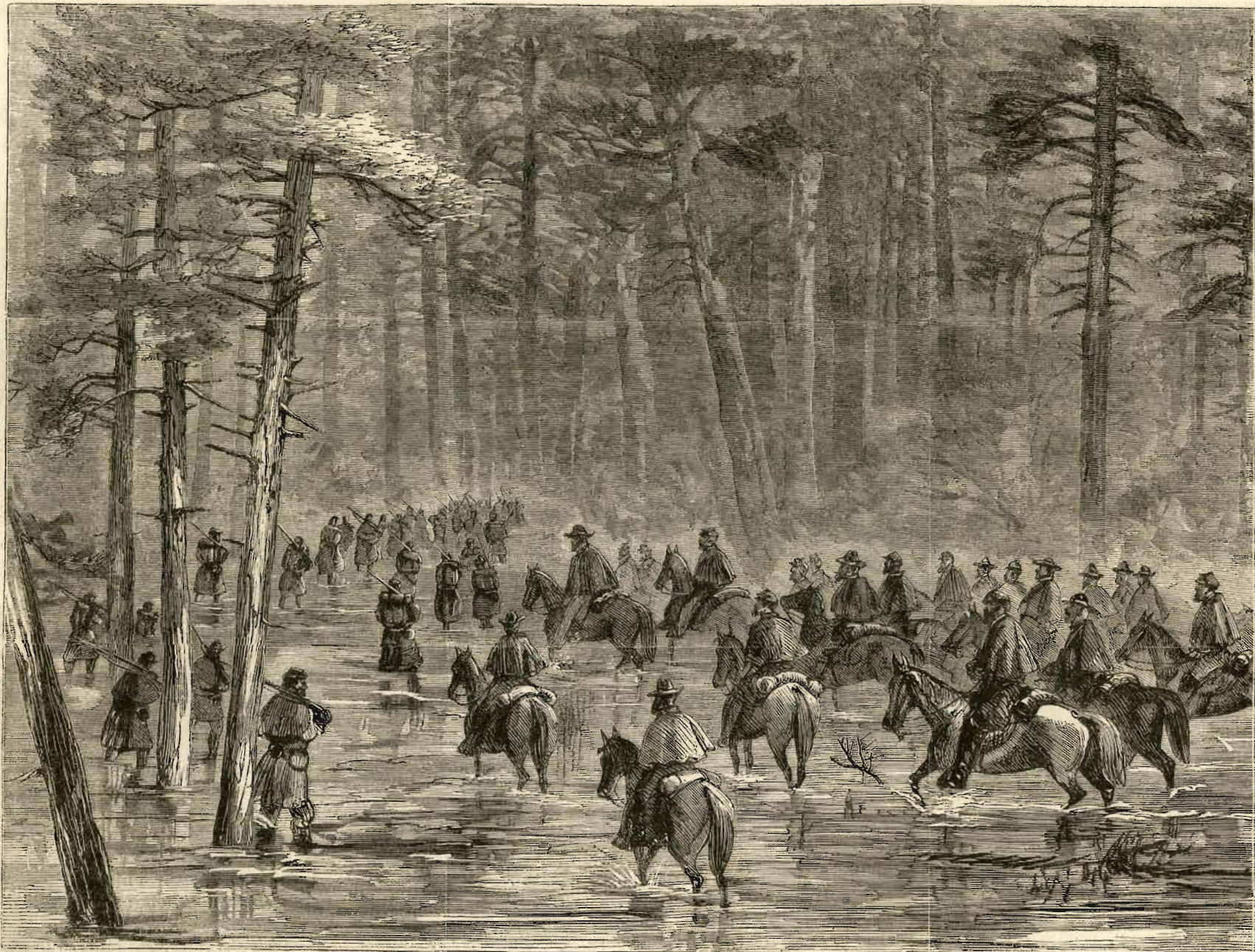
FORT THUNDERBOLT, SAVANNAH.



POCOTALIGO DEPOT.



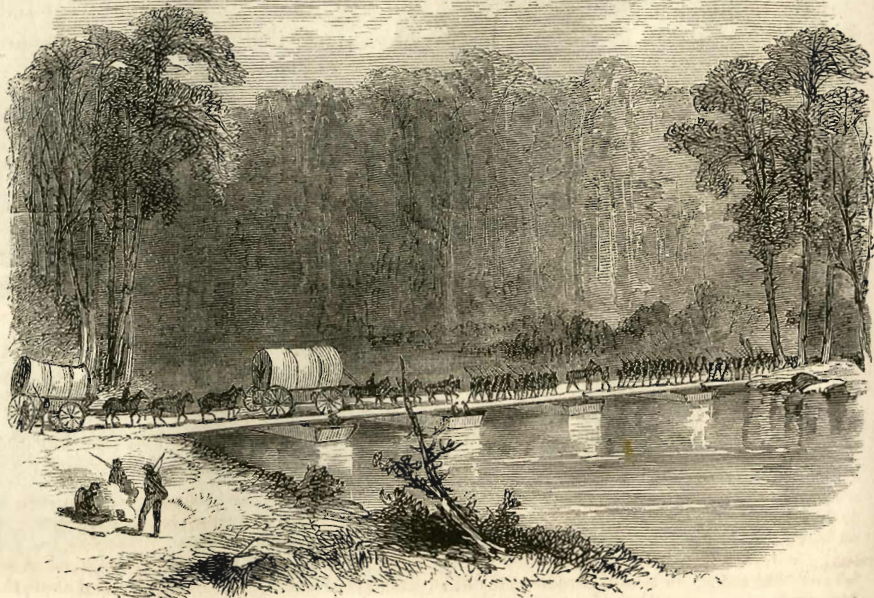
SLOCUM'S ARMY CROSSING THE SAVANNAH AT SISTER'S FERRY.



MARCHING THROUGH THE SWAMPS.



ENTERING BLACKVILLE, SOUTH CAROLINA.



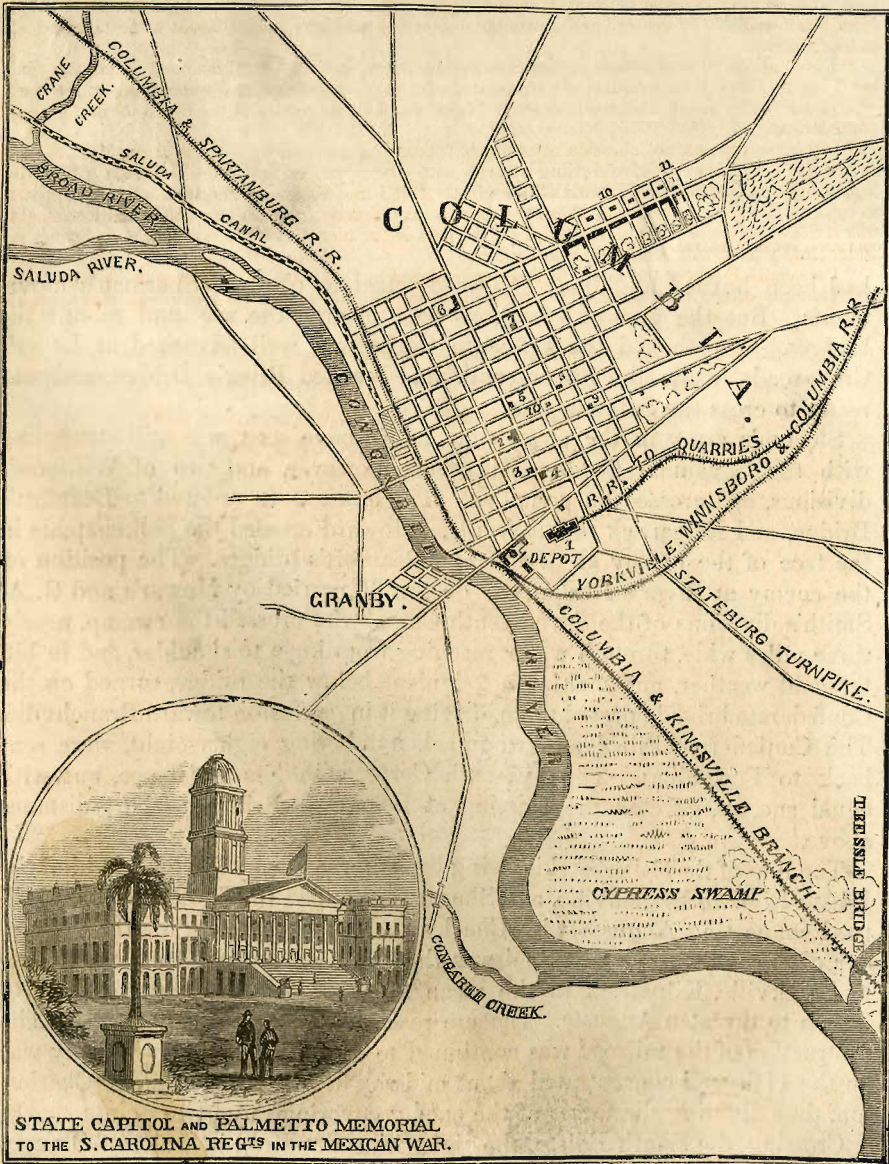
CROSSING THE SOUTH EDISTO.



SHERMAN'S ARMY ENTERING COLUMBIA, SOUTH CAROLINA.



MAP OF SHERMAN'S CAROLINA MARCH.



STATE CAPITOL AND PALMETTO MEMORIAL
TO THE S. CAROLINA REG'TS IN THE MEXICAN WAR.



WADE HAMPTON.



COLUMBIA ON FIRE.



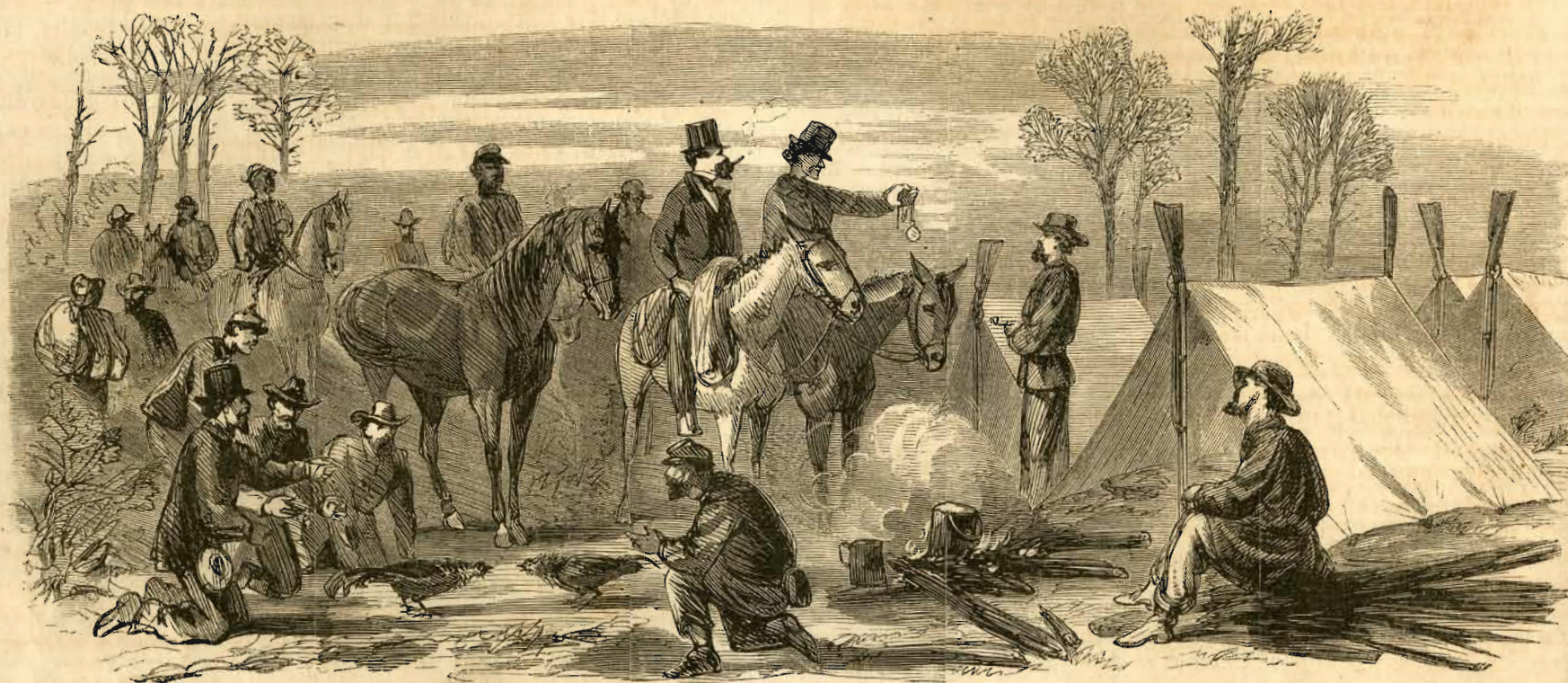
WINNSBOROUGH, SOUTH CAROLINA.



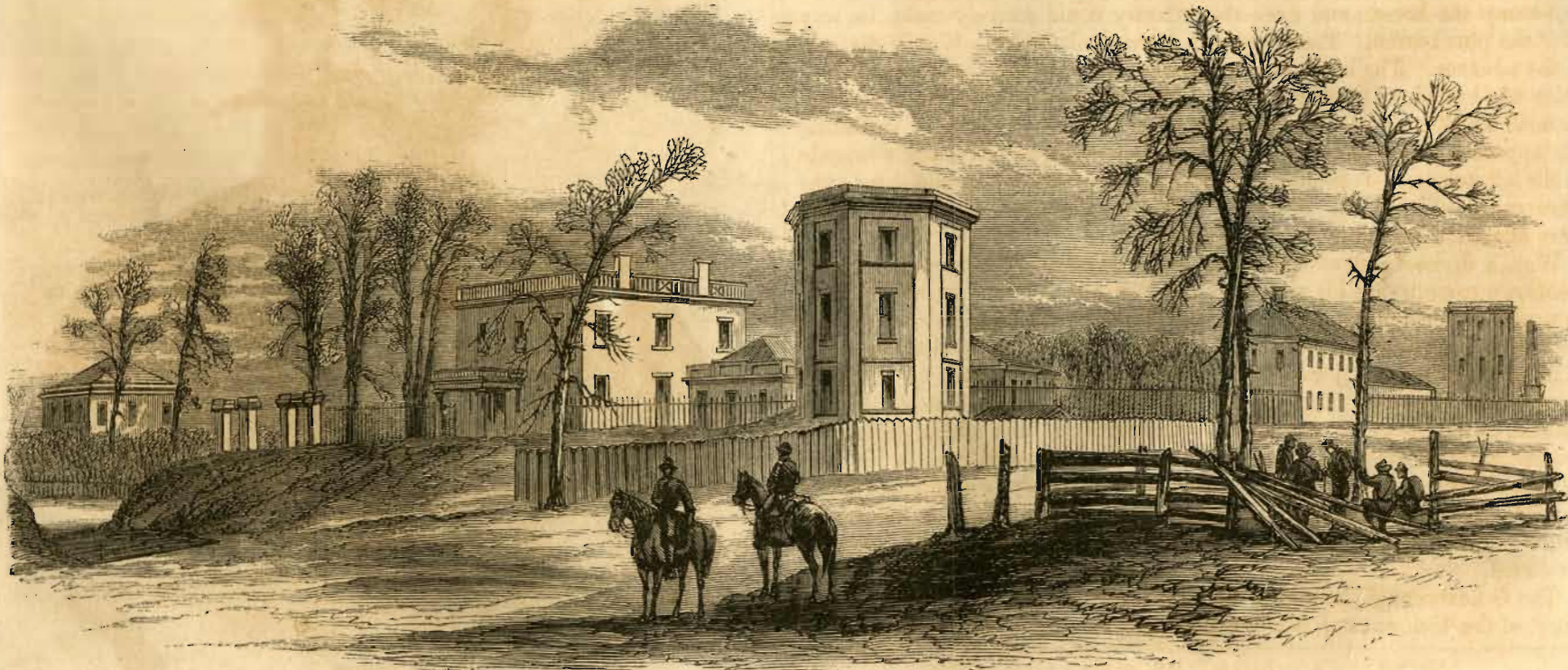
HANGING ROCK, SOUTH CAROLINA.



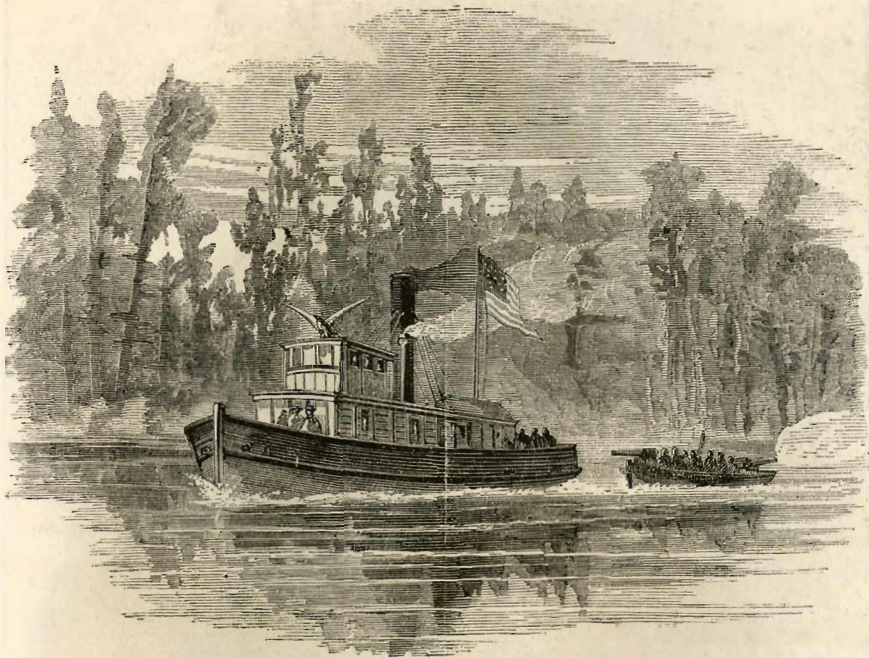
FORAGERS STARTING OUT.



FORAGERS RETURNING TO CAMP.



UNITED STATES ARSENAL AT FAYETTEVILLE



THE TUG-BOAT DONALDSON MOVING UP THE CAPE FEAR.



A. S. WILLIAMS.



1. Charleston and Savannah Railroad.—2. Ashley River.—3. Charleston.—4. Cooper River.—5. Wando River.—6. Castle Pinckney.—7. Fort Ripley.—8. Fort Johnson (James's Island).—9. Stono River.—10. Fort Sumter.—11. Fort Moultrie.—12. Battery Gregg (Cummings's Point).—13. Fort Wagner.—14. General Gillmore's Advanced Batteries.—15. Captured Works (Morris's Island).—16. Light-house Inlet.—17. Union Battery (Folly Island).—18. Iron-clads and Wooden Ships.—19. Hotel.—20. Sullivan's Island and Rebel Batteries.—21. Moultrieville.—22. Mount Pleasant.—23. Breach Inlet.—24. Shem Creek.—0, 0. Rebel Batteries on James's Island.

CHARLESTON AND ITS ENVIRONS.



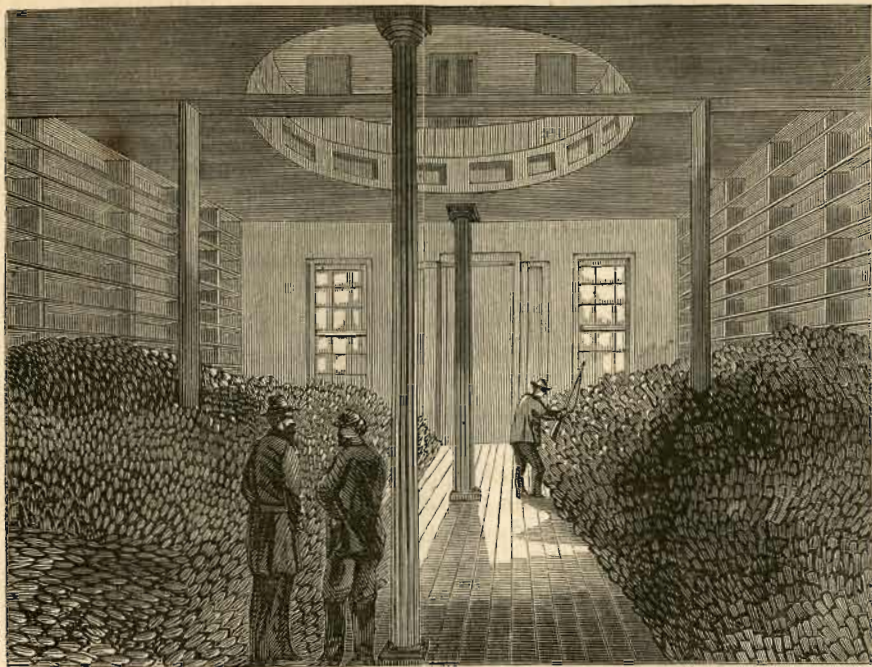
PORTION OF CHARLESTON EXPOSED TO THE FIRE OF THE FEDERAL FLEET.



JAMES BENNETT'S HOUSE, WHERE JOHNSTON SURRENDERED.



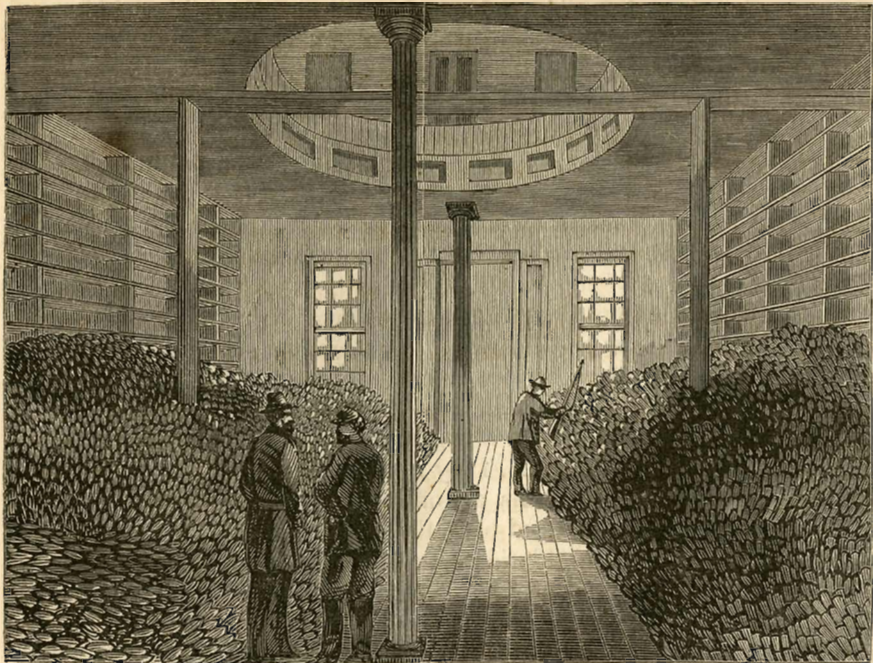
JOHNSTON'S SURRENDER.



SMALL-ARMS SURRENDERED BY JOHNSTON.



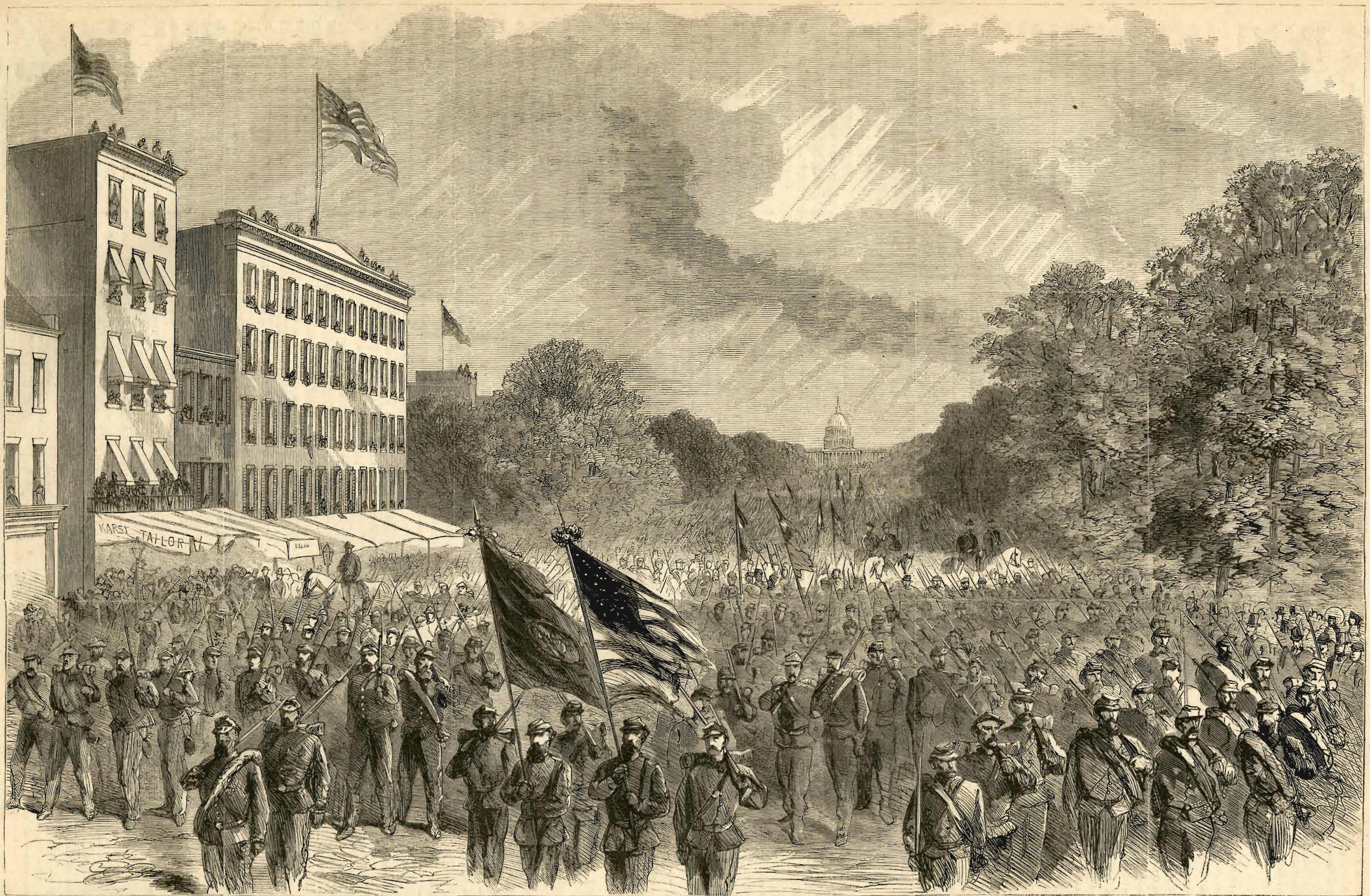
ACCOUTREMENTS SURRENDERED BY JOHNSTON.



SMALL-ARMS SURRENDERED BY JOHNSTON.



ACCOUTREMENTS SURRENDERED BY JOHNSTON.



GRAND REVIEW AT WASHINGTON.—SHERMAN'S VETERANS MARCHING THROUGH PENNSYLVANIA AVENUE.